

7

Weather, Climate and Adaptations of Animals to Climate

Do you remember the things that you were asked to pack when you were heading for a hill station? When the sky is cloudy, your parents insist that you carry an umbrella. Have you heard elders in your family discuss the weather before planning a family function? You must have also heard the experts discussing the weather before the start of a game. Have you ever wondered why? The weather may have a profound effect on the game. It has a profound effect on our lives. Many of our daily activities are planned based on the weather predicted for that day. There are daily reports of the weather on the television and radio and in the newspapers. But do you know what this weather really is?

In this chapter, we will study about the weather and climate. We will also see how different forms of life are adapted to the climate of their habitat.

7.1 WEATHER

In Fig. 7.1 a sample of weather report from a newspaper is given.

We find that the daily weather report carries information about the temperature, humidity and rainfall during the past 24 hours. It also predicts the weather for the day. Humidity, as you might know, is a measure of the moisture in air.

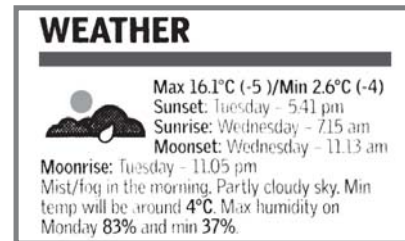


Fig. 7.1 A sample of a weather report from a newspaper



The weather reports are prepared by the Meteorological Department of the Government. This department collects data on temperature, wind, etc., and makes the weather prediction.

Activity 7.1

Cut out the weather reports of the last week from any newspaper. If you do not get a newspaper at home borrow from your neighbours or friends and copy these reports in your notebook. You can also collect weather reports from a library. Paste all the cut-outs on a white sheet or on a chart paper.

Now record the information from the weather reports collected by you in Table 7.1. The first row is just a sample. Fill all the columns according to the data in the chart that you have prepared.

Table 7.1

Weather data of a week

Date	Max. temp. (°C)	Min. temp. (°C)	Min. humidity (%)	Max. humidity(%)	Rainfall* (mm)
23-08-06	36.2	27.8	54	82	

*(Rainfall may not be recorded for all the days since it may not rain everyday. Leave the space for rainfall blank if the data is not available.)

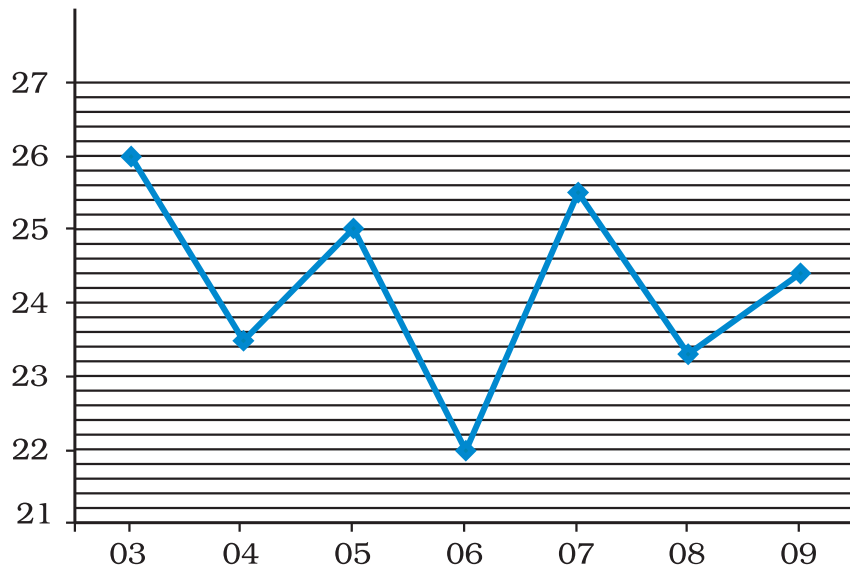
Rainfall is measured by an instrument called the rain gauge. It is basically a measuring cylinder with a funnel on top to collect rainwater.

Do all the seven days have the same maximum and minimum temperatures, humidity and rainfall? The maximum and minimum temperatures recorded may be the same for some of the days. However, all the parameters are not the same on any two days. Over a week there may be considerable variation. **The day-to-day condition of the atmosphere at a place with respect to the temperature, humidity, rainfall, wind-speed, etc., is called the weather at that place.** The temperature, humidity, and other factors are called the **elements** of the weather. The weather of a place changes day after day and week after week. That is why we often say, “today’s

weather is too humid”, or “the weather was warm last week”.

The weather is such a complex phenomenon that it can vary over very short periods of time. It can happen sometimes that it is sunny in the morning, but suddenly clouds appear from nowhere and it starts raining heavily. Or, a heavy rain may vanish in a matter of minutes and give way to bright sunshine. You must have had several such experiences. Try to recall any such experience and share it with your friends. Since weather is such a complex phenomenon, it is not easy to predict.

Look at the graph given below which shows the maximum temperature recorded during 03 August 2006 to 09 August 2006 at Shillong, Meghalaya (Fig. 7.2).

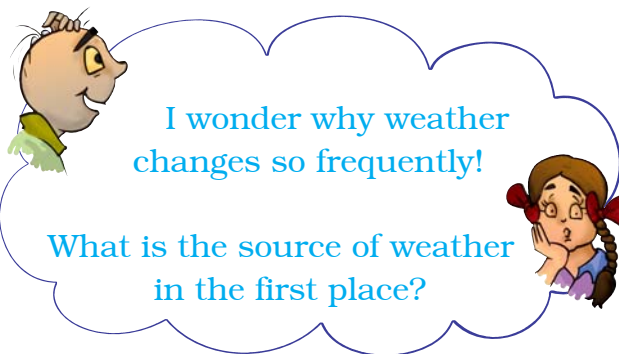


Date	Maximum temperature
03-08-06	26.0°C
04-08-06	23.5°C
05-08-06	25.0°C
06-08-06	22.0°C
07-08-06	25.5°C
08-08-06	23.3°C
09-08-06	24.4°C

Fig. 7.2 Graph showing the variation of maximum temperature during 03 to 09 August 2006

As it is clear from any weather report, the maximum and minimum temperatures are recorded every day. Do you know how these temperatures are recorded. In Chapter 4 you have learnt

that there are special thermometers for this purpose, called **maximum and minimum thermometers**. Can you guess when during the day we have the maximum temperature and when the minimum?



The maximum temperature of the day occurs generally in the afternoon while the minimum temperature occurs generally in the early morning. Can you now understand why in summers we feel so miserable in the afternoon and comparatively comfortable early in the morning?

All changes in the weather are caused by the **sun**. The sun is a huge sphere of hot gases at a very high temperature. The distance of the sun from us is very large. Even then the energy sent out by the sun is so huge that it is the source of all heat and light on the earth. So, the sun is the primary source of energy that causes changes in the weather. Energy absorbed and reflected by the earth's surface, oceans and the atmosphere play important roles in determining the weather at any place. If you live near the sea, you would have realised that the weather at your place is different from that of a place in a desert, or near a mountain.

What about the times of sunrise and sunset? You know that in winters it becomes dark early and you do not get much time to play. Are the days shorter in winter than in summer? Try to find it out yourself by completing the project given at the end of the chapter.

7.2 CLIMATE

Meteorologists record the weather every day. The records of the weather have been preserved for the past several decades. These help us to determine the weather pattern at a place. **The average weather pattern taken over a long time, say 25 years, is called the climate of the place.** If we find that the temperature at a place is high most

of the time, then we say that the climate of that place is hot. If there is also heavy rainfall on most of the days in the same place, then we can say that the climate of that place is hot and wet.

In Table 7.2 and 7.3, we have given the climatic condition at two places in India. The mean temperature for a given month is found in two steps. First we find the average of the temperatures recorded during the month. Second, we calculate the average of such average temperatures over many years. That gives the mean temperature. The two places are: Srinagar in Jammu and Kashmir, and Thiruvananthapuram in Kerala.

Table 7.2 Srinagar (Jammu & Kashmir)

Information about climate

Month	Mean temperature °C		Mean total rainfall (mm)
	Daily minimum	Daily maximum	
Jan	-2.3	4.7	57
Feb	-0.6	7.8	65
Mar	3.8	13.6	99
Apr	7.7	19.4	88
May	10.7	23.8	72
Jun	14.7	29.2	37
July	8.2	30.0	49
Aug	17.5	29.7	70
Sep	12.9	27.8	33
Oct	6.1	21.9	36
Nov	0.9	14.7	27
Dec	-1.6	8.2	43

Table 7.3 Thiruvananthapuram (Kerala)

Information about climate

Month	Mean temperature °C		Mean total rainfall (mm)
	Daily minimum	Daily maximum	
Jan	22.2	31.5	23
Feb	22.8	31.9	24
Mar	24.1	32.6	40
Apr	24.9	32.6	117
May	24.7	31.6	230
Jun	23.5	29.7	321
July	23.1	29.2	227
Aug	23.2	29.4	138
Sep	23.3	30.0	175
Oct	23.3	29.9	282
Nov	23.1	30.3	185
Dec	22.6	31.0	66

(Note: The numbers for the mean total rainfall have been rounded off)

By looking at Tables 7.2 and 7.3 we can easily see the difference in the climate of Jammu & Kashmir and Kerala. We can see that Kerala is very hot and wet in comparison to Jammu & Kashmir, which has a moderately hot and wet climate for a part of the year.

Similar data for the western region of India, for example Rajasthan, will show that the temperature is high during most part of the year. But during winter, which lasts only for a few months, the temperature is quite low. This region receives very little rainfall. This is the typical desert climate. It is **hot and dry**. The north-eastern India receives rain for a major part of the year. Therefore, we can say that the climate of the north-east is **wet**.

7.3 CLIMATE AND ADAPTATION

Climate has a profound effect on all living organisms.

Animals are adapted to survive in the conditions in which they live. Animals living in very cold and hot climate must possess special features to protect themselves against the extreme cold or heat. Recall from Chapter 9 of your Class VI science book the definition of adaptation. Features and habits that help animals to adapt to their surroundings are a result of the process of evolution.

In Chapter 9 you will learn about the effect of weather and climate on soil. Here we study the effect of climate on animals only. In Class VI, you have read about adaptations of animals to certain

habitats. As examples of adaptation of animals to climatic conditions, we discuss only animals living in polar regions and tropical rainforests.

As the name suggests, the polar regions are situated near the poles, i.e., north pole and south pole.

Some well-known countries that belong to the polar regions are Canada, Greenland, Iceland, Norway, Sweden, Finland, Alaska in U.S.A. and Siberian region of Russia.

Examples of some countries where the tropical rainforests are found are India, Malaysia, Indonesia, Brazil, Republic of Congo, Kenya, Uganda, and Nigeria.

Activity 7.2

Take an outline map of the world. Mark the polar regions in blue. Similarly, mark the tropical regions in red.

(i) The polar regions

The polar regions present an extreme climate. These regions are covered with snow and it is very cold for most part of the year. For six months the sun does not set at the poles while for the other six months the sun does not rise. In winters, the temperature can be as low as -37°C . Animals living there have adapted to these severe conditions. Let us see how they are adapted by considering the examples of polar bears and penguins.

Polar bears have white fur so that they are not easily visible in the snowy white background. It protects them from

their predators. It also helps them in catching their prey. To protect them from extreme cold, they have two thick layers of fur. They also have a layer of fat under their skin. In fact, they are so well-insulated that they have to move slowly and rest often to avoid getting overheated.

Physical activities on warm days necessitate cooling. So, the polar bear goes for swimming. It is a good swimmer. Its paws are wide and large, which help it not only to swim well but also walk with ease in the snow. While swimming under water, it can close its nostrils and can remain under water for long durations. It has a strong sense of smell so that it can catch its prey for food. We can understand the adaptations of polar bears with the help of the flow chart shown in Fig. 7.3.

Another well-known animal living in the polar regions is the penguin (Fig. 7.4). It is also white and merges well with the white background. It also has a thick skin and a lot of fat to protect it from cold. You may have seen pictures of penguins huddled together. This they do to keep warm. Recall how warm you feel when you are in a hall full of people.



Fig. 7.4 Penguins huddled together

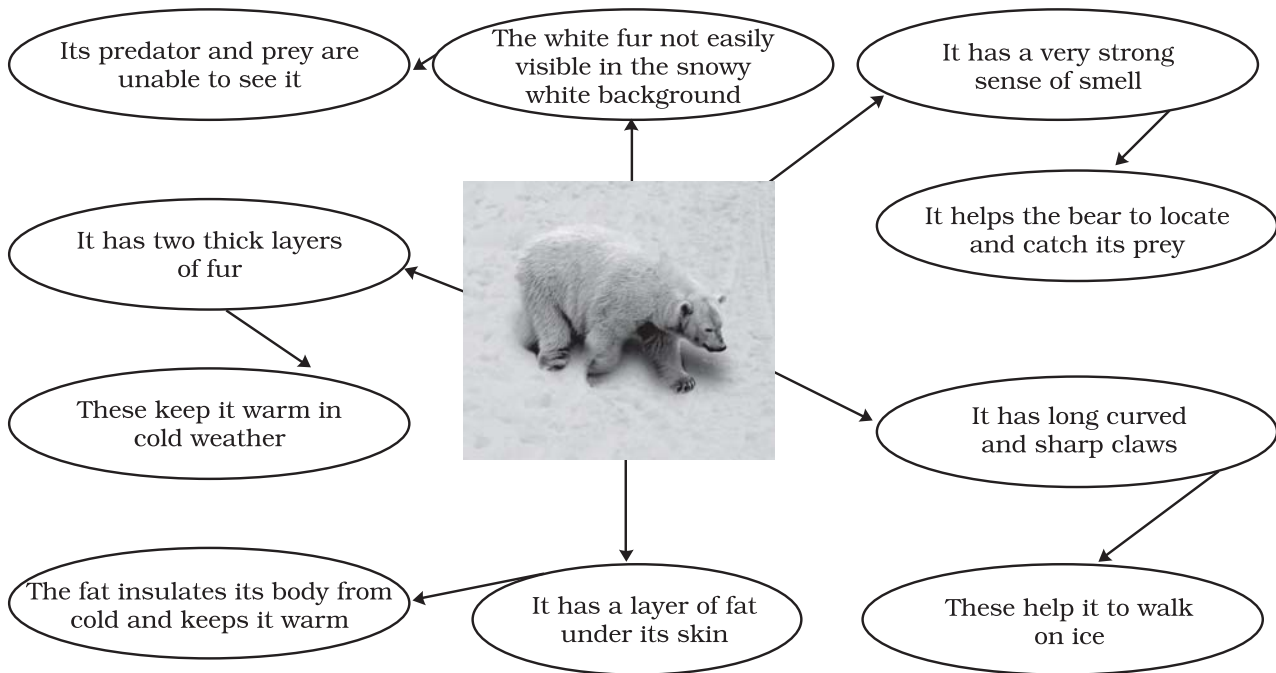


Fig. 7.3 Adaptations of polar bear



Fig. 7.5 Feet of penguin

Like polar bears, penguins are also good swimmers. Their bodies are streamlined and their feet have webs, making them good swimmers (Fig. 7.5).

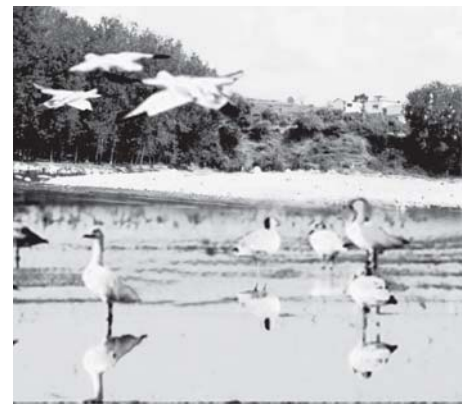
Other animals living in the polar regions are many types of fishes, musk oxen, reindeers, foxes, seals, whales, and birds. It is to be noted that while fish can remain under cold water for

long, birds must remain warm to survive. They migrate to warmer regions when winter sets in. They come back after the winter is over. You know probably that India is one of the destinations of many of these birds. You must have seen or heard about the Siberian crane that comes from Siberia to places like Bharatpur in Rajasthan and Sultanpur in Haryana, and some



Do fishes and butterflies also migrate like birds?

Fig. 7.6 Migratory birds in their habitat/ Migratory birds in flight



Did you know?

Some migratory birds travel as much as 15000 km to escape the extreme climatic conditions at home. Generally they fly high where the wind flow is helpful and the cold conditions allow them to disperse the heat generated by their flight muscles. But how these birds travel to the same place year after year is still a mystery. It seems that these birds have a built-in sense of direction and know in which direction to travel. Some birds probably use landmarks to guide them. Many birds may be guided by the sun during the day and stars at night. There is some evidence that birds may use the magnetic field of the earth to find direction. And it is not only birds that migrate; mammals, many types of fish and insects are also known to migrate seasonally in search of more hospitable climates.

wetlands of north east and some other parts of India (Fig. 7.6).

(ii) The tropical rainforests

The tropical region has generally a hot climate because of its location around the equator. Even in the coldest month the temperature is generally higher than about 15°C. During hot summers, the temperature may cross 40°C. Days and nights are almost equal in length throughout the year. These regions get plenty of rainfall. An important feature of this region is the tropical rainforests. Tropical rainforests are found in Western Ghats and Assam in India, Southeast Asia, Central America and Central Africa. Because of continuous warmth and rain, this region supports wide variety of plants and animals. The major types of animals living in the rainforests are monkeys, apes, gorillas, lions, tigers, elephants, leopards, lizards, snakes, birds and insects.

Let us read about the adaptations of these animals to a hot, humid climate.

The climatic conditions in rainforests are highly suitable for supporting an enormous number and variety of animals.

Since the numbers are large, there is intense competition for food and shelter. Many animals are adapted to living on the trees. Red-eyed frog (Fig. 7.7) has developed sticky pads on its feet to help it climb trees on which it lives. To help them live on the trees, monkeys (Fig. 7.8) have long tails for grasping branches. Their hands and feet



Fig. 7.7 Red-eyed frog



Fig. 7.8 A new world monkey

are such that they can easily hold on to the branches.

As there is competition for food, some animals are adapted to get food not easily reachable. A striking example is that of the bird Toucan (Fig. 7.9), which possesses a long, large beak. This helps a toucan to reach the fruits on branches which are otherwise too weak to support its weight.

Many tropical animals have sensitive hearing, sharp eyesight, thick skin and a skin colour which helps them to camouflage by blending with the surroundings. This is to protect them from predators. For example, big cats



Fig. 7.9 Toucan



Fig. 7.10 Lion-tailed macaque

(lions and tigers) have thick skins and sensitive hearing.

The lion-tailed macaque (also called Beard ape) lives in the rainforests of Western Ghats (Fig. 7.10). Its most outstanding feature is the silver-white mane, which surrounds the head from the cheeks down to its chin. It is a good climber and spends a major part of its life on the tree. It feeds mainly on fruits. It also eats seeds, young leaves, stems, flowers and buds. This beard ape also searches for insects under the bark of the trees. Since it is able to get sufficient food on the trees, it rarely comes down on the ground.

Another well-known animal of Indian tropical rainforest is the elephant

(Fig. 7.11). It has adapted to the conditions of rainforests in many remarkable ways. Look at its trunk. It uses it as a nose because of which it has a strong sense of smell. The trunk is also used by it for picking up food. Moreover, its tusks are modified teeth. These can tear the bark of trees that elephant loves to eat. So, the elephant is able to handle the competition for food rather well. Large ears of the elephant help it to hear even very soft sounds. They also help the elephant to keep cool in the hot and humid climate of the rainforest.

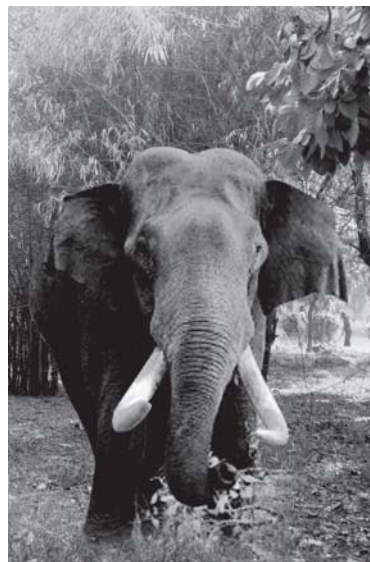


Fig. 7.11 An Indian elephant

Keywords

Adaptation	Maximum temperature	Tropical rainforest
Climate	Migration	Tropical region
Elements of weather	Minimum temperature	Weather
Humidity	Polar region	

What you have learnt

- The day-to-day condition of the atmosphere at a place with respect to the temperature, humidity, rainfall, wind-speed, etc., is called the weather at that place.
- The weather is generally not the same on any two days and week after week.
- The maximum temperature of the day occurs generally in the afternoon while the minimum temperature occurs in the early morning.
- The times of sunrise and sunset also change during the year.
- All the changes in the weather are driven by the sun.
- The average weather pattern taken over a long time, say 25 years, is called the climate of the place.
- The tropical and the polar regions are the two regions of the earth, which have severe climatic conditions.
- Animals are adapted to the conditions in which they live.
- The polar regions are very cold throughout the year. The sun does not set for six months in a year and in the other six months it does not rise.
- Animals in the polar region are adapted to the extremely cold climate by having some special characteristics such as white fur, strong sense of smell, a layer of fat under the skin, wide and large paws for swimming and walking, etc.
- Migration is another means to escape the harsh, cold conditions.
- Because of the hospitable climatic conditions huge populations of plants and animals are found in the tropical rainforests.
- Animals in the tropical rainforests are adapted such that they eat different kinds of food to overcome the competition for food and shelter.
- Some adaptations of animals living in the tropical rainforests include living on the trees, development of strong tails, long and large beaks, bright colours, sharp patterns, loud voice, diet of fruits, sensitive hearing, sharp eyesight, thick skin, ability to camouflage in order to protect themselves from predators, etc.

Exercises

1. Name the elements that determine the weather of a place.
2. When are the maximum and minimum temperature likely to occur during the day?
3. Fill in the blanks:
 - (i) The average weather taken over a long time is called _____.

- (ii) A place receives very little rainfall and the temperature is high throughout the year, the climate of that place will be _____ and _____ .
- (iii) The two regions of the earth with extreme climatic conditions are _____ and _____ .
4. Indicate the type of climate of the following areas:
- (a) Jammu and Kashmir: _____
- (b) Kerala: _____
- (c) Rajasthan: _____
- (d) North-east India: _____
5. Which of the two changes frequently, weather or climate?
6. Following are some of the characteristics of animals:
- | | |
|---------------------------|------------------------------|
| (i) Diets heavy on fruits | (ii) White fur |
| (iii) Need to migrate | (iv) Loud voice |
| (v) Sticky pads on feet | (vi) Layer of fat under skin |
| (vii) Wide and large paws | (viii) Bright colours |
| (ix) Strong tails | (x) Long and large beak |

For each characteristic indicate whether it is adaptation for tropical rainforests or polar regions. Do you think that some of these characteristics can be adapted for both regions?

7. The tropical rainforest has a large population of animals. Explain why it is so.
8. Explain, with examples, why we find animals of certain kind living in particular climatic conditions.
9. How do elephant living in the tropical rainforest adapt itself.
- Choose the correct option which answers the following question:**
10. A carnivore with stripes on its body moves very fast while catching its prey. It is likely to be found in
- | | |
|-------------------|---------------------------|
| (i) polar regions | (ii) deserts |
| (iii) oceans | (iv) tropical rainforests |
11. Which features adapt polar bears to live in extremely cold climate?
- | |
|--|
| (i) A white fur, fat below skin, keen sense of smell. |
| (ii) Thin skin, large eyes, a white fur. |
| (iii) A long tail, strong claws, white large paws. |
| (iv) White body, paws for swimming, gills for respiration. |

12. Which option best describes a tropical region?

- (i) hot and humid
- (ii) moderate temperature, heavy rainfall
- (iii) cold and humid
- (iv) hot and dry

Extended Learning — Projects and Activities

1. Collect weather reports of seven successive days in the winter months (preferably December). Collect similar reports for the summer months (preferably June). Now prepare a table for sunrise and sunset times as shown:

Table

June			December		
Date	Sunrise	Sunset	Date	Sunrise	Sunset

Try to answer the following questions:

- (i) Is there any difference in the time of sunrise during summer and winter?
- (ii) When do you find that the sun rises earlier?
- (iii) Do you also find any difference in the time of sunset during the month of June and December?
- (iv) When are the days longer?
- (v) When are the nights longer?
- (vi) Why are the days sometimes longer and sometimes shorter?
- (vii) Plot the length of the day against the days chosen in June and December.

(Instructions for plotting graphs are given in Chapter 13.)

2. Collect information about the Indian Meteorological Department. If possible visit its website: <http://www.imd.gov.in>.

Write a brief report about the things this department does.

Did you know?

Rainforests cover about 6% of the earth's surface, but they have more than half of the animal life and about two-thirds of the flowering plants of the planet. However, much of this life is still unknown to us.